

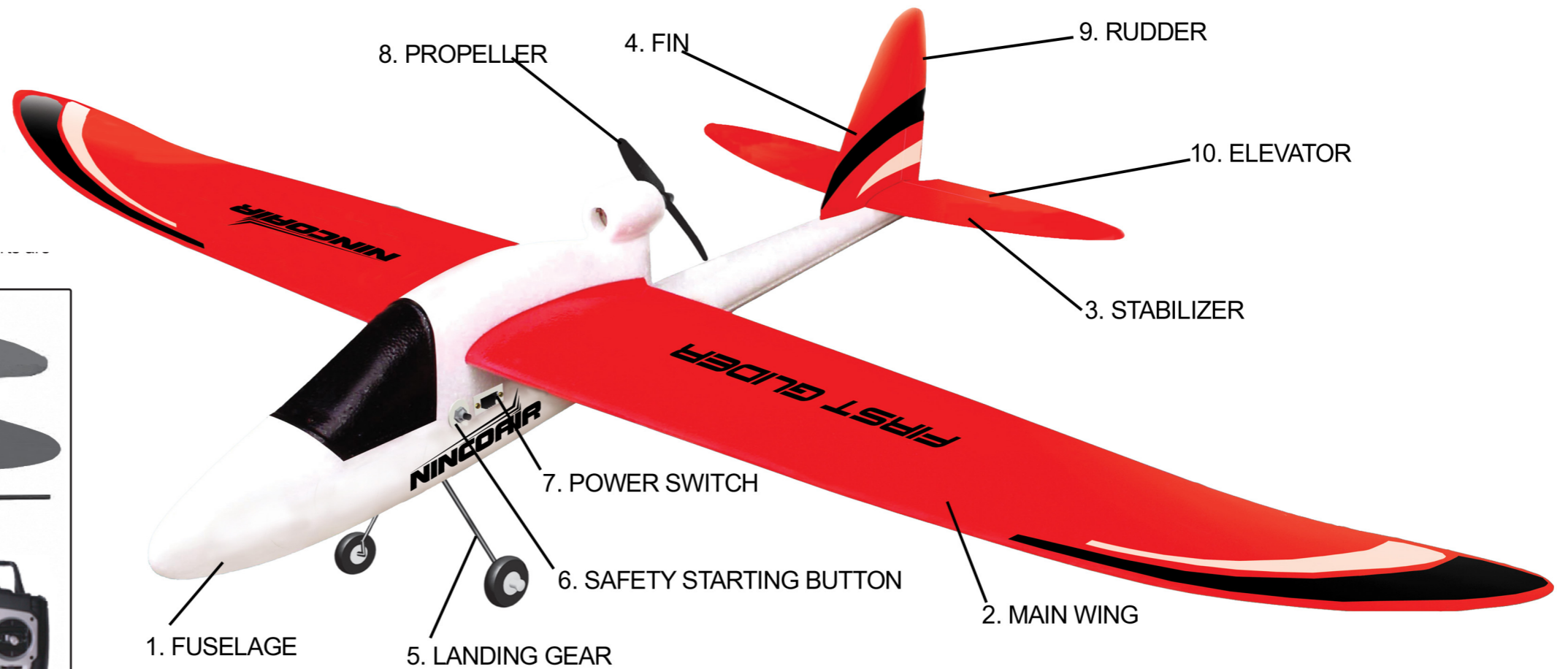
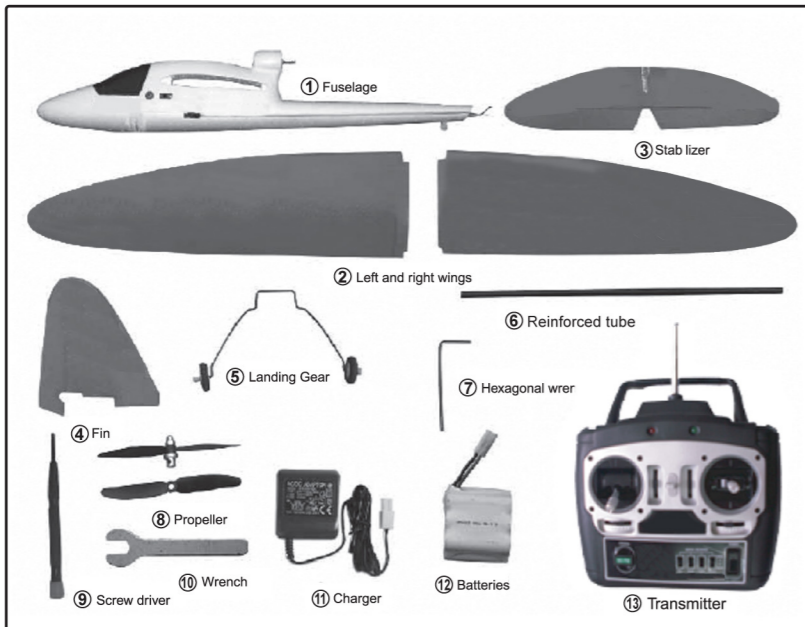
### PRODUCT SPECIFICATIONS

WINGSPAN:----- 13800 mm  
 WING AREA:----- 20.1 dm<sup>2</sup>  
 LENGTH:----- 888mm  
 FLYING WEIGHT:----- 578 gr  
 POWER SYSTEM:-----380 motor  
 BATTERY:-----8.4V-1300mAh  
 FLYING TIME:----- approx 20 min.

### DIRECTIONS FOR THE ASSEMBLY AND ADJUSTMENT

### PART LISTS

Please locate all parts according to the packing list enclosed. If missing, please contact your local distributor for assistance.



### (1) Installation

|  |  |  |   |  |  |  |   |
|--|--|--|---|--|--|--|---|
| <p>1. Bend the landing gear as the image above and install it to the landing gear slot under the fuselage.</p> | <p>2. Insert the propeller to the motor shaft.</p>   | <p>3. Tighten the propeller by wrench provided.</p>                          | <p>4. Insert the left or right main wing to fuselage and make sure the position is correct.</p> | <p>5. Insert reinforced tube to the hole on the wing through the fuselage.</p>   | <p>6. Insert other main wing.</p>                | <p>7. Remove protective paper from double-sided tape at the bottom of vertical fin and install it to the stabilizer.</p>   | <p>8. Remove protective paper from double-sided tape at the bottom of the stabilizer.</p> |
| <p>9. Remove protective paper from double-sided tape at the tail of fuselage.</p>                              | <p>10. Insert tail wing to fuselage, make sure the position is correct and press down the double-sided tape.</p> | <p>11. Connecting the pushrods to the horns for the rudder and elevator.</p> | <p>12. Adjust the clips to level both the rudder and elevator.</p>                              | <p>13. After assembling the airplane, check the symmetry and balance of the wings and tail of the wing-tips should be at the same level.</p> | <p>14. Open the canopy hatch as shown above.</p> | <p>15. Connect the battery pack to the power socket in fuselage and push the battery pack into the fuselage. Make sure the battery pack is held in place firmly.</p> | <p>16. Close the canopy hatch as shown above.</p>   |

### (2) Setting and usage of radio system

**1.** Check if the input voltage of the charger is the same as voltage supply of your country carefully connect the charger to batteries for charging. charging time is approximately 4-5 hours for totally discharged batteries. Charging time maybe shorter depending on the status of batteries.

**2.** Remove battery cover and install 8 pieces Alkaline or rechargeable AA batteries (not provided).

**ATTENTION:**  
 A. Switch off the power supply before inserting batteries.  
 B. Only use the same type of battery, do not mix brand or types.  
 C. Replace all batteries at the time with new ones.  
 D. Do not mix old and new batteries.

**TRANSMITTER FUNCTIONS:**  
**CH1:** Use for controlling flying left and right direction. (see in diagram 5)  
**CH2:** Use for controlling flying up and down direction. (see in diagram 4)

**REV BUTTON:** Use for changing control arm control direction.

### (3) Flying and landing

|  |  |  |  |
|--|--|--|--|
| <p>1. <b>Ground take-off:</b> Check the direction of wind. Position the model to a 20 meter runway. Model must be heading the direction of wind. After switching on the power of radio, then turn on the power supply on plane. position the motor speed control from L(Low) to H(High) position. Plane will normally take off after 15 meters of taxiing on ground.</p> | <p>2. If the plane is climbing too slow, pull down the left trim slightly. If it still can't be corrected, please pull down the left control stick slightly.</p>             | <p>3. During flying, if plane is flying with "waves", push up the left trim slightly. If it still can't be corrected, please push up the left control stick slightly.</p>  | <p>4. If the flying direction of plane deviates during flying, it can be adjusted by the sub-trim.</p> |
| <p>5. <b>Hand launching:</b> Model must be heading the direction of wind. After switching on the power of radio, then turn on the power supply on plane. Position the motor speed control from L(Low) to H(High) position. Throw the plane at straight direction toward the direction of wind. Plane will climb steadily.</p>  | <p>6. After turn off the motor, the plane will be declining at 10 degree downwards, longer gliding time can be achieved by pulling down the left control stick slightly.</p> | <p>7. Choosing the plane to land at head wind position. Turn off or slow down the power of motor, the model will decline steadily. Pull up the left control arm for helping the plane steady gliding down for landing.</p> |  |

### (4) Maintenances

- ★ After landing, switch off the power of plane immediately.
- ★ Take out the Ni-MH batteries.
- ★ Check if all parts of plane have no damage.
- ★ Any damaged parts should be replaced before next flight.
- ★ Clean the model before next flight.

#### Español [Spanish]:

Por medio de la presente NINCO DESARROLLOS S.L. declara que el equipo de radio control cumple con los requisitos esenciales y cualesquiera otras disposiciones aplicables o exigibles de la Directiva 1999/5/CE.

#### English:

Hereby, NINCO DESARROLLOS S.L., declares that this Radio Control Equipment is in compliance with the essential requirements and other relevant provisions of Directive 1999/5/EC.

#### Português [Portuguese]:

NINCO DESARROLLOS S.L. declara que este Rádio Control Equipment está conforme com os requisitos essenciais e outras disposições da Directiva 1999/5/CE.

### ATTENTION

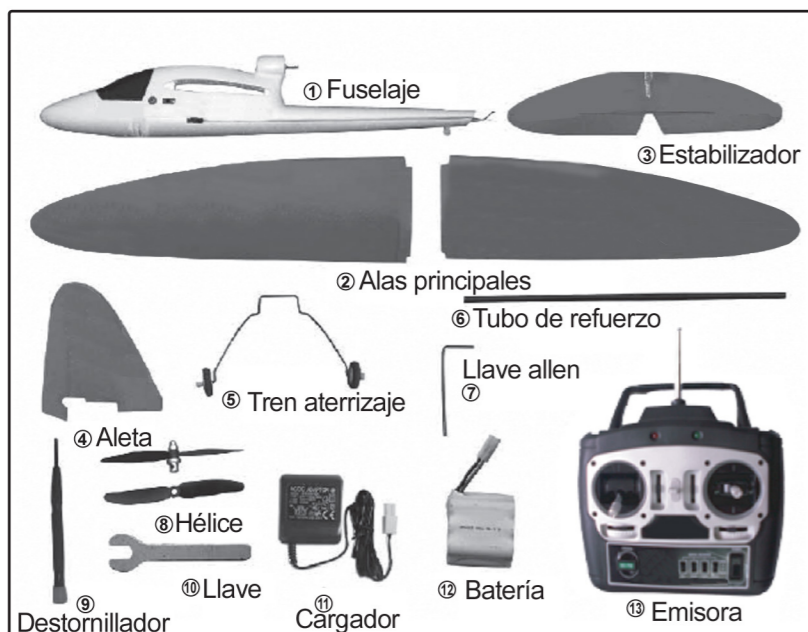
- ★ Read and study the manual before installation of plane.
- ★ Before each flight, power of radio should be turned ON prior turning on the power on plane.
- ★ After each landing, power of plane should be turned OFF and then power of radio should be turned OFF afterwards
- ★ When red warning light on radio is flashing and beeping is heard, batteries must be replaced immediately.
- ★ The model should be flown in open space with no harm to public.
- ★ It is hazardous to touch the spinning propeller.
- ★ Aware of charging time of batteries. Prolonged charging will not only shorten the life of batteries, but also fire hazard.
- ★ Dispose of Ni-MH batteries with care, explosion may occur when Ni-MH batteries are thrown in fire.
- ★ Do not charge batteries when they are hot.
- ★ Do not fly the airplane near to the other using same frequencies to avoid interference.
- ★ Make sure charger and battery not beside flammable object when charging, and there is person keep an eye on them

## ESPECIFICACIONES:

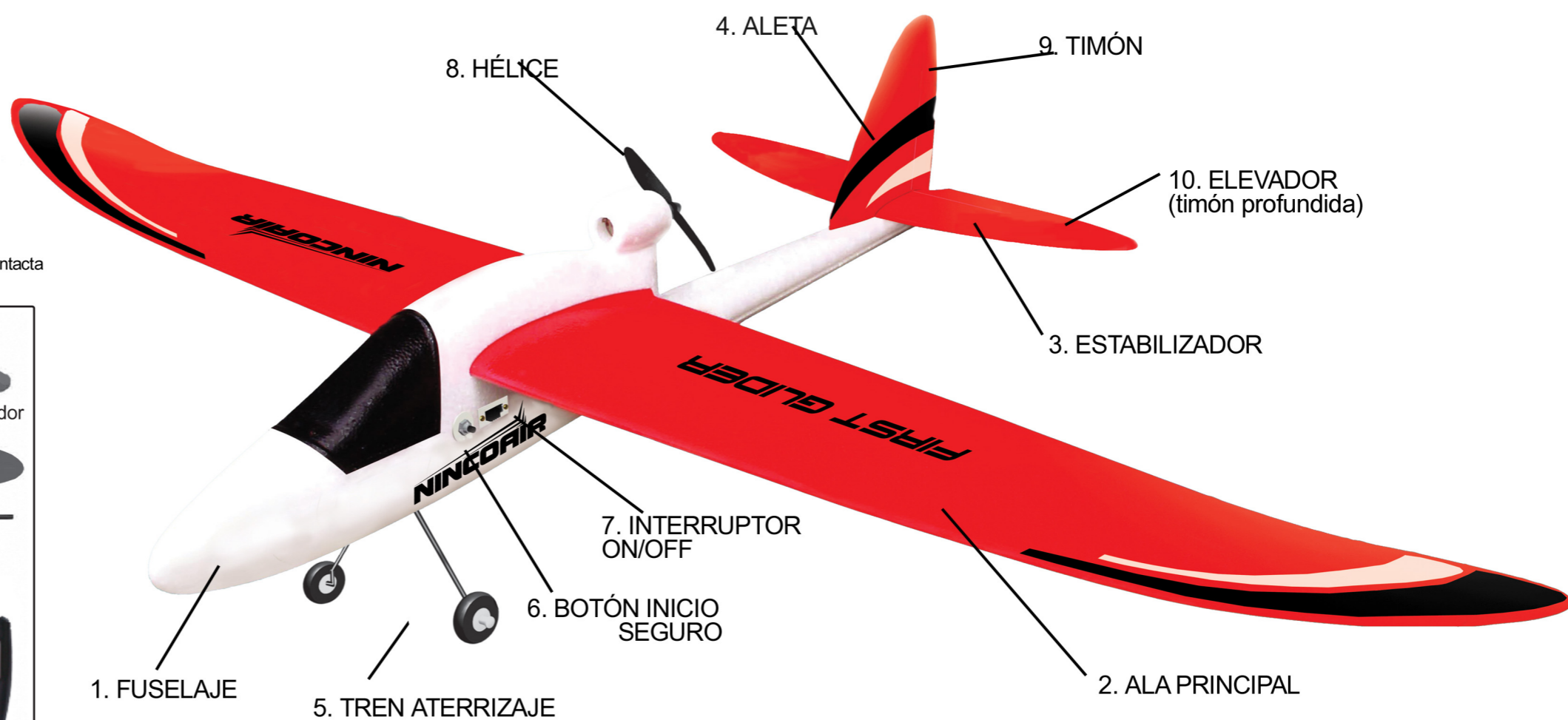
ENVERGADURA:..... 13800 mm  
 SUPERFICIE ALAR: ..... 20.1 dm<sup>2</sup>  
 LONGITUD:..... 888mm  
 PESO DE VUELO: ..... 578 gr  
 MOTORIZACIÓN: .....380 motor  
 BATERÍA: .....8.4V-1300mAh  
 TIEMPO DE VUELO:..... aprox 20 min.

## LISTADO PIEZAS:

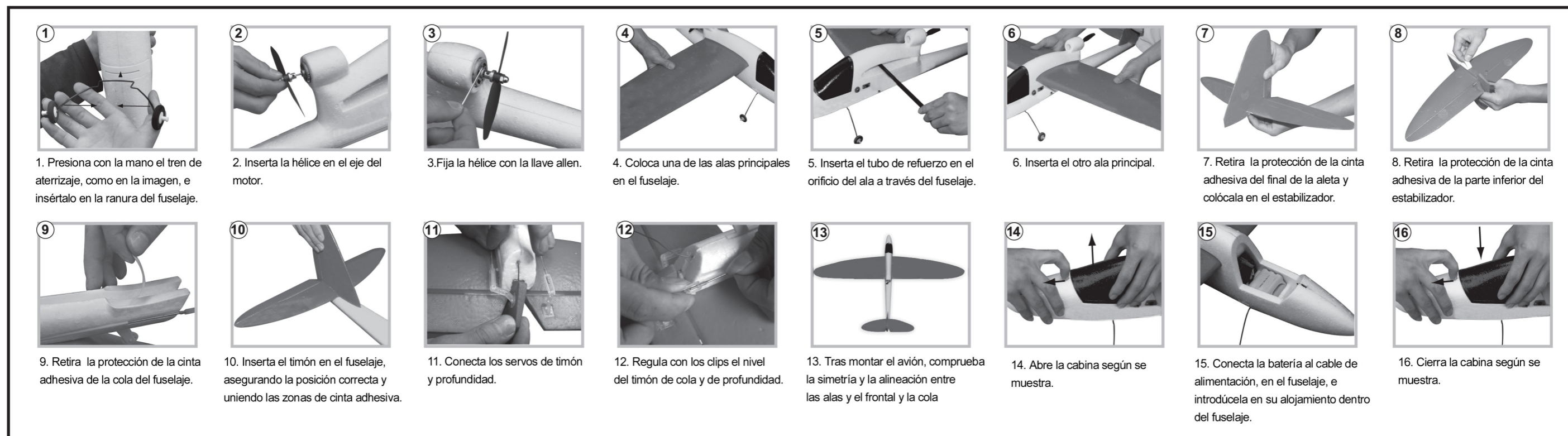
Coloca todas las piezas listadas a continuación. Si faltara alguna, por favor contacta con tu distribuidor local. your local distributor



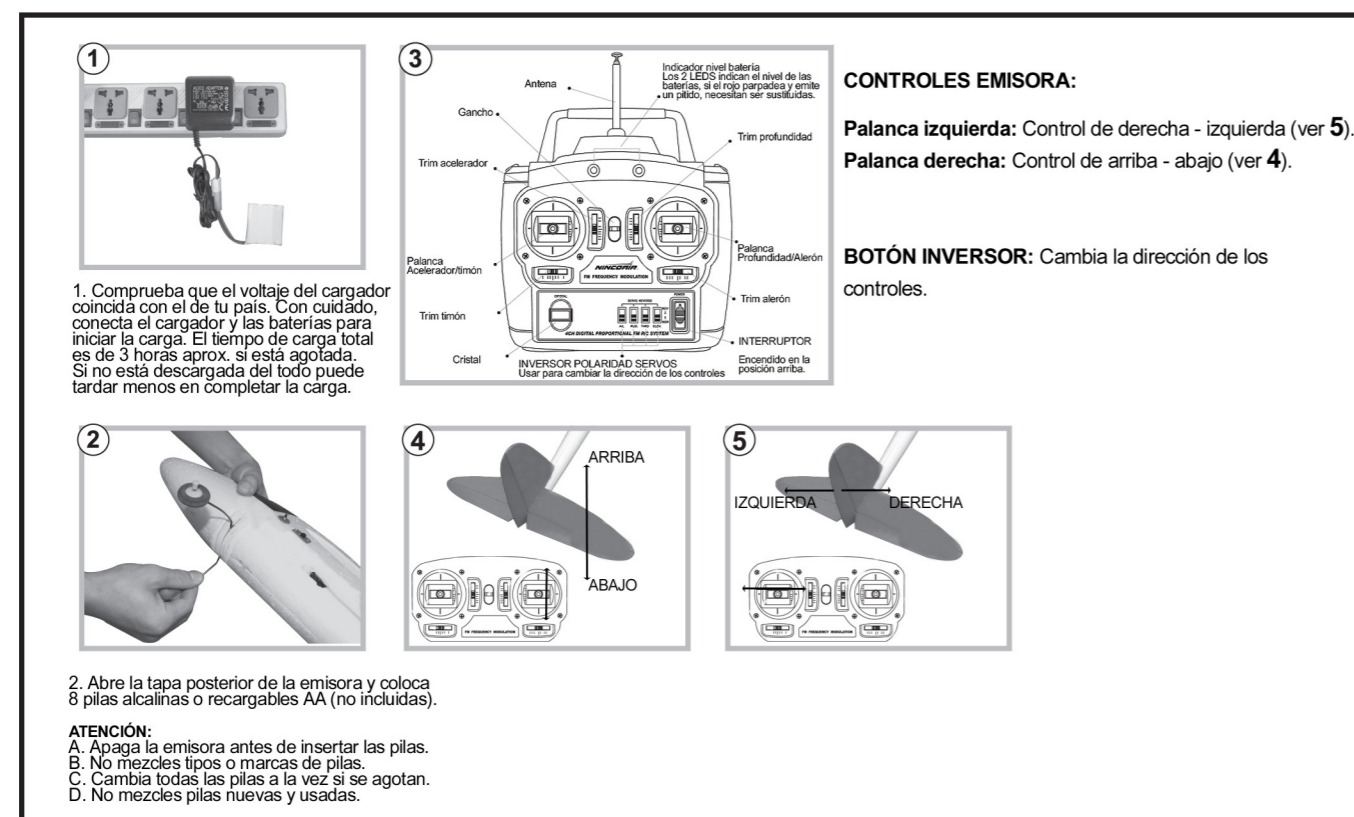
## INSTRUCCIONES DE MONTAJE Y AJUSTE



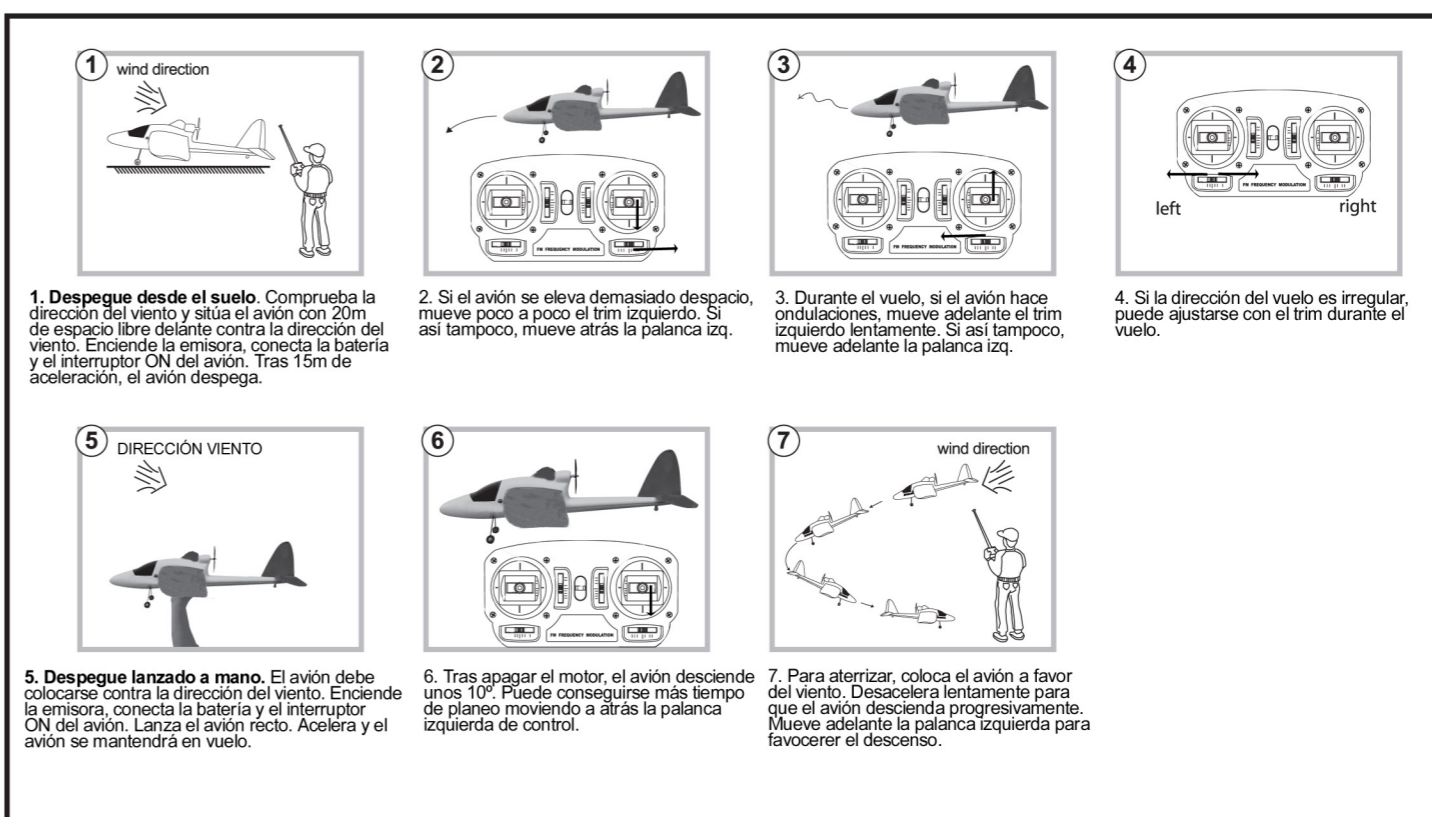
### (1) MONTAJE



### (2) PREPARACIÓN Y CONTROL DEL EQUIPO DE RADIO



### (3) VUELO Y ATERRIZAJE



### (4) MANTENIMIENTO

- Después de aterrizar, desconecte la batería del avión inmediatamente.
- Retira las baterías Ni-MH.
- Comprueba que no hay piezas dañadas.
- Cualquier pieza dañada debería ser reemplazada antes del siguiente vuelo.
- Limpia el avión después de un vuelo.

#### Español [Spanish]:

Por medio de la presente NINCO DESARROLLOS S.L. declara que el equipo de radio control cumple con los requisitos esenciales y cualesquiera otras disposiciones aplicables o exigibles de la Directiva 1999/5/CE.

#### English:

Hereby, NINCO DESARROLLOS S.L., declares that this Radio Control Equipment is in compliance with the essential requirements and other relevant provisions of Directive 1999/5/EC.

#### Português [Portuguese]:

NINCO DESARROLLOS S.L. declara que este Rádio Control Equipment está conforme com os requisitos essenciais e outras disposições da Directiva 1999/5/CE.

## ATENCIÓN

- Lee atentamente el manual de instrucciones antes de montar el avión.
- Antes de cada vuelo, conecta siempre primero la emisora y a continuación el avión.
- Después de cada vuelo, desconecta siempre primero el avión y después la emisora.
- Cuando el avisador rojo de la emisora parpadea y emite un pitido, sustituye las baterías inmediatamente.
- El avión debe volarse en espacios abiertos sin personas alrededor.
- Es peligroso tocar la hélice cuando está en movimiento.
- Vigila la carga de la batería. La sobrecarga no sólo acorta la vida de la misma, sino que puede provocar un incendio.
- Desecha las baterías Ni-MH en el contenedor adecuado. Pueden explotar en contacto con el fuego.
- No cargues las baterías cuando estén calientes.
- No vuelas el avión cerca de otros aviones que usen la misma frecuencia para evitar interferencias.
- Asegúrate de que el cargador y la batería no están en contacto con objetos inflamables durante el proceso de carga y que hay alguien supervisando la carga.