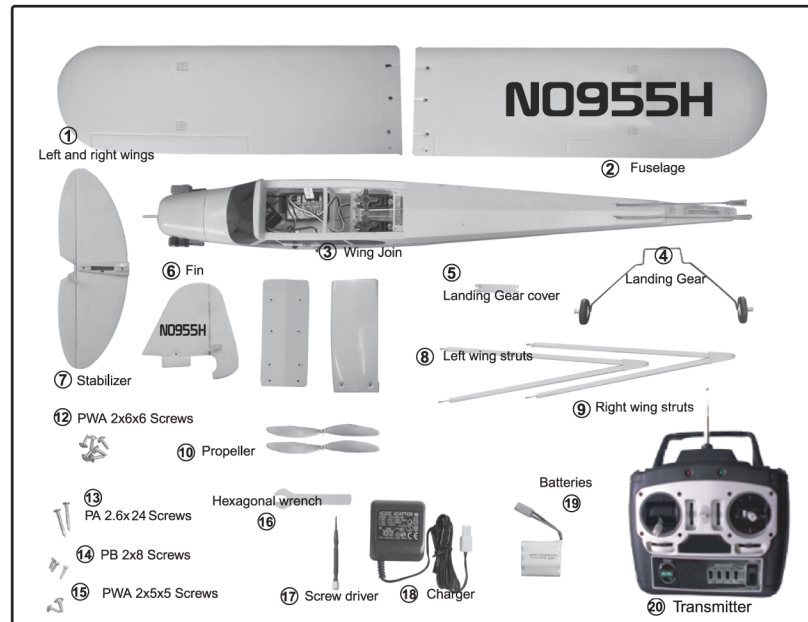


### PRODUCT SPECIFICATIONS

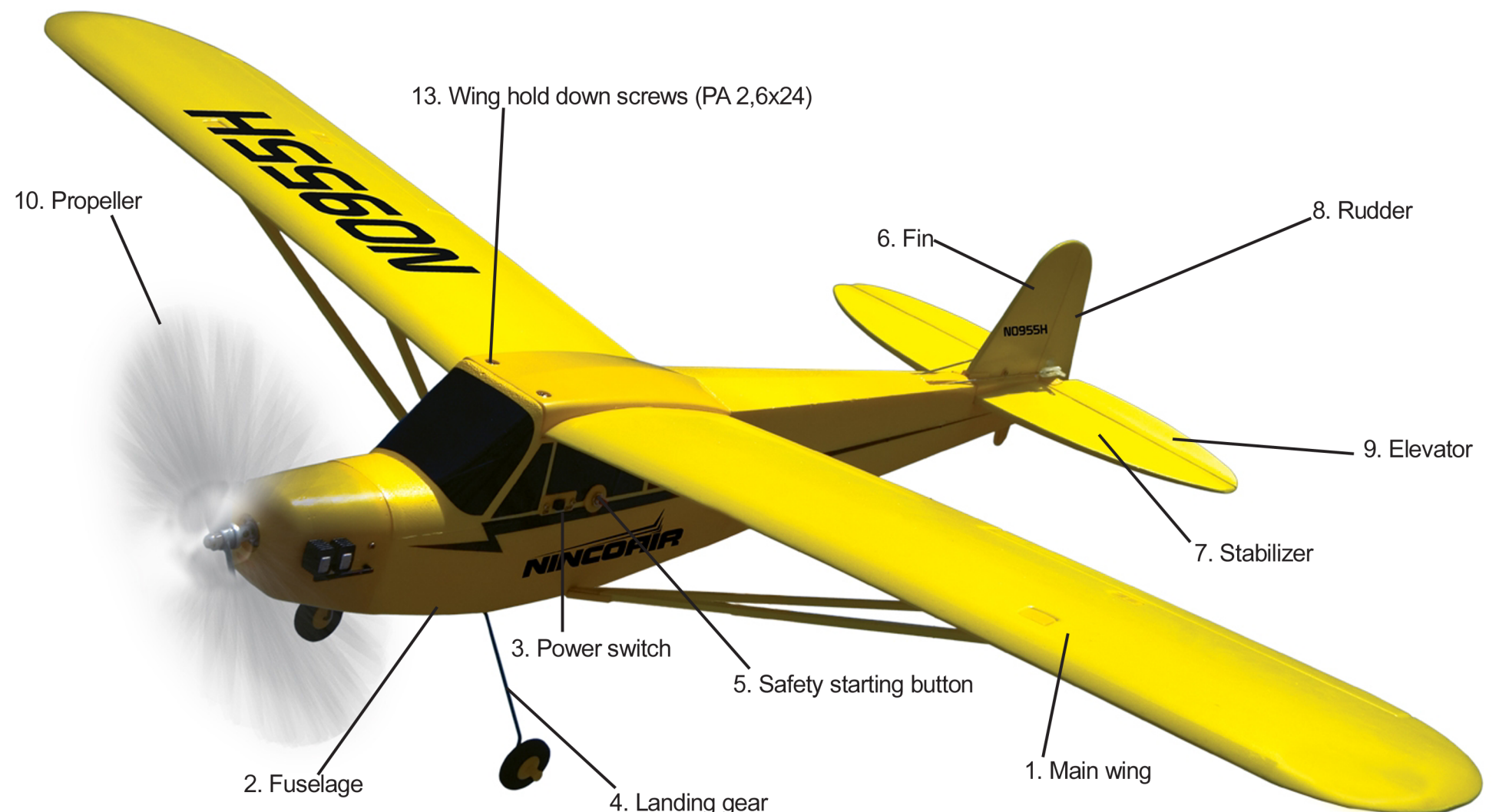
WINGSPAN: ----- 955mm  
 WING AREA: ----- 13.7dm<sup>2</sup>  
 FUSELAGE LENGTH: ---- 730mm  
 FLYING WEIGHT: ----- 514g  
 POWER SYSTEM: ----- 380 Motor  
 BATTERY: ----- 8.4V-600mAh  
 FLIGHT TIME: ----- Approx 10min

### PART LISTS

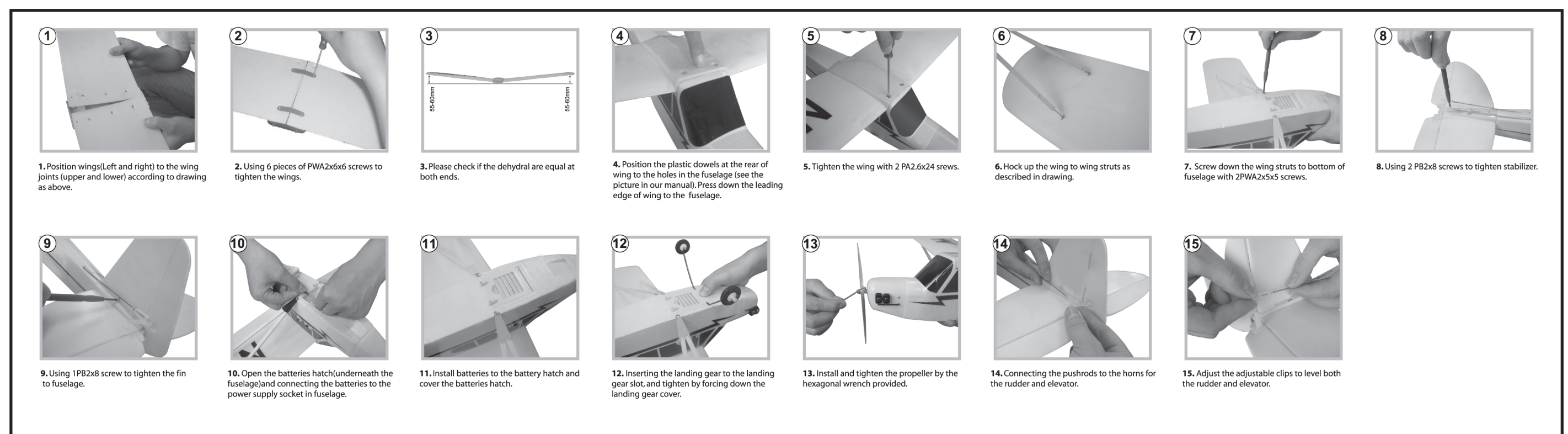
Please locate all parts according to the packing list enclosed. If parts are missing, please contact your local distributor for assistance.



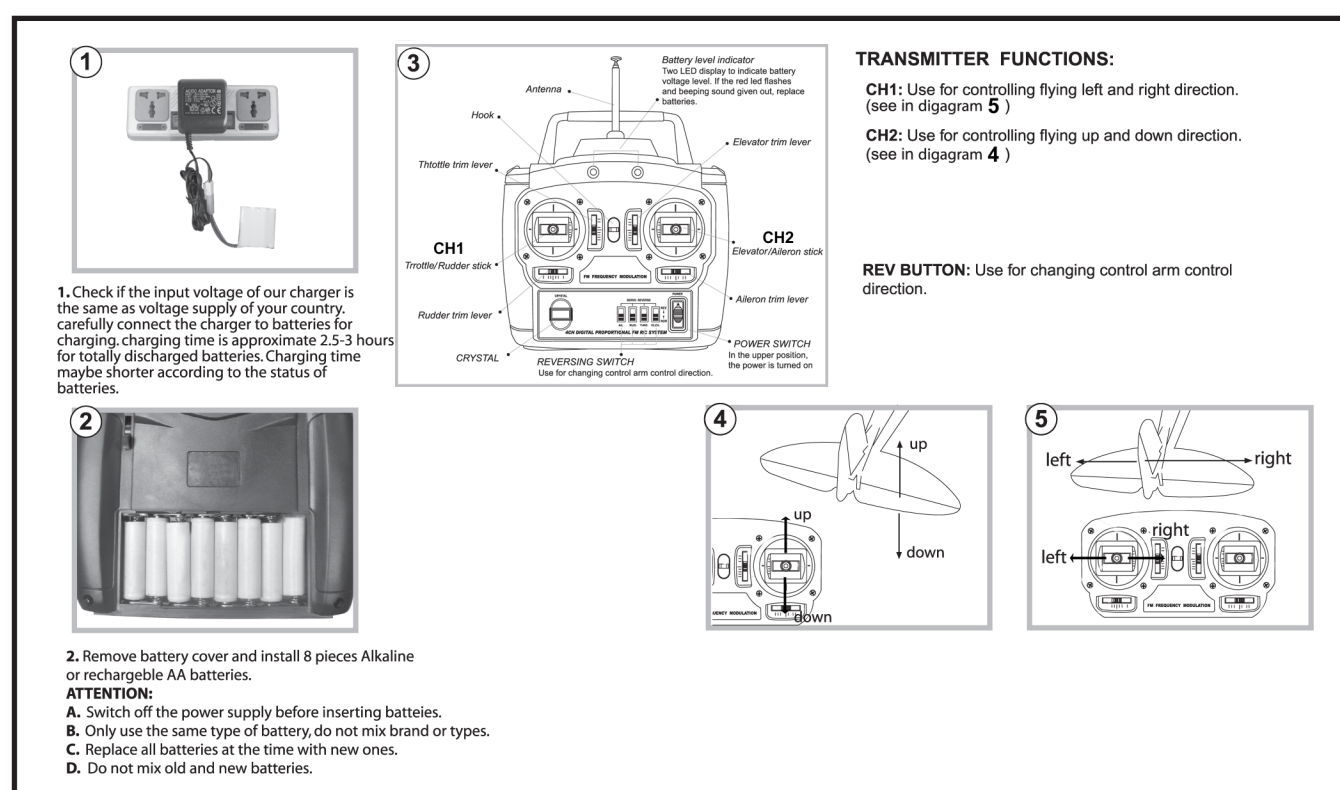
### DIRECTIONS FOR THE ASSEMBLY AND ADJUSTMENT



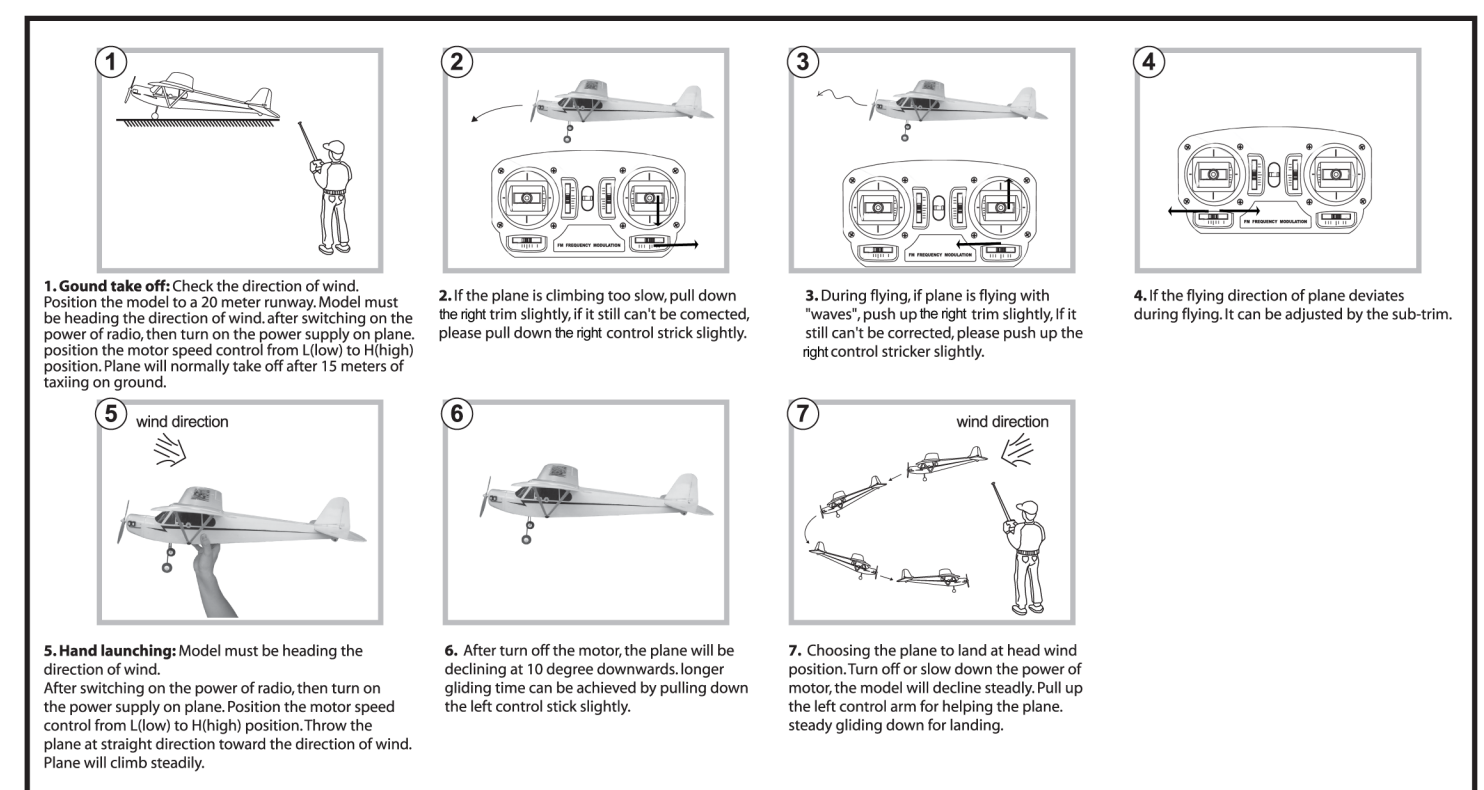
### (1) Installation



### (2) Setting and usage of radio system



### (3) Flying and landing



### (4) Maintenances

- ★ After landing, switch off the power of plane immediately.
- ★ Take out the Ni-MH batteries.
- ★ Check if all parts of plane have no damage.
- ★ Any damaged parts should be replaced before next flight.
- ★ Clean the model before next flight.

#### Español [Spanish]:

Por medio de la presente NINCO DESARROLLOS S.L. declara que el equipo de radio control cumple con los requisitos esenciales y cualesquiera otras disposiciones aplicables o exigibles de la Directiva 1999/5/CE.

#### English:

Hereby, NINCO DESARROLLOS S.L., declares that this Radio Control Equipment is in compliance with the essential requirements and other relevant provisions of Directive 1999/5/EC.

#### Português [Portuguese]:

NINCO DESARROLLOS S.L. declara que este Radio Control Equipment está conforme com os requisitos essenciais e outras disposições da Directiva 1999/5/CE.

### ATTENTION

- ★ Read and study the manual before installation of plane.
- ★ Before each flight, power of radio should be turn ON prior turning on the power on plane.
- ★ After each landing, power of plane should be turned OFF and then power of radio should be turned OFF afterwards
- ★ When red warning light on radio is flashing and beeping is heard, batteries must be replaced immediately.
- ★ The model should be flown in open space with no harm to public.
- ★ It is hazardous to touch the spinning propeller.
- ★ Aware of charging time of batteries. Prolonged charging will not only shorten the life of batteries, but also fire haza
- ★ Dispose of Ni-MH batteries with care, explosion may occur when Ni-MH batteries are thrown in fire.
- ★ Do not charge batteries when they are hot.
- ★ Do not fly the airplane near to the other using same frequencies to avoid interference.
- ★ Make sure charger and battery not beside flammable object when charging, and there is person keep an eye on them